



Hawkhurst Drive | Rugeley | WS15 3RN

Offers In The Region Of £220,000



Summary

**** IMMACULATELY PRESENTED THROUGHOUT ** SOUGHT AFTER VILLAGE LOCATION ** IDEAL FOR FIRST TIME BUYERS ** TWO BEDROOMS ** DOWNSTAIRS CLOAKROOM ** MODERN FITTED KITCHEN WITH ELECTRIC UNDERFLOOR HEATING ** GOOD SIZE REAR GARDEN ** DRIVEWAY ** CLOSE TO AMENITIES ** VIEWING ESSENTIAL ****

WEBBS ESTATE AGENTS are pleased to market this immaculately presented, two bedroom end terraced home, located in the sought after village of Hill Ridware on Hawkhurst Drive. Viewing of the home is absolutely essential to fully appreciate not only the size and space on offer, but also the meticulous finish the current owners have achieved. The property is within a short distance to amenities, useful transport links, schools and miles of countryside walks.

The internal accommodation briefly comprises, modern fitted kitchen with electric underfloor heating, living dining room, downstairs cloakroom, two bedrooms and bathroom. Both the downstairs cloakroom and bathroom benefit from electric underfloor heating. The property also boasts a low maintenance rear garden, driveway and additional parking to the rear.

Key Features

- IMMACULATELY PRESENTED THROUGHOUT
- IDEAL FOR FIRST TIME BUYERS
- MODERN FITTED KITCHEN WITH UNDERFLOOR HEATING
- GOOD SIZE REAR GARDEN
- CLOSE TO AMENITIES
- SOUGHT AFTER VILLAGE LOCATION
- TWO BEDROOMS
- DOWNSTAIRS CLOAKROOM
- DRIVEWAY
- VIEWING ESSENTIAL

Rooms and Dimensions

Living Room

9'7 x 14'8 (2.92m x 4.47m)

Kitchen

9'6 x 9'6 (2.90m x 2.90m)

WC

2'9 x 6'10 (0.84m x 2.08m)

Landing

Bedroom 1

12'6 x 8'8 (3.81m x 2.64m)

Bedroom 2

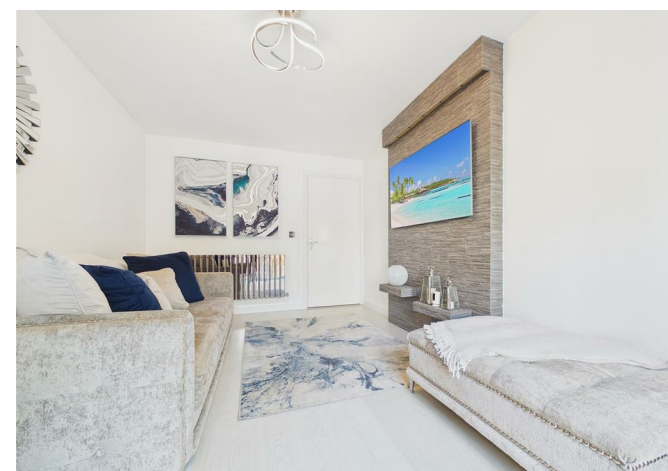
9'7 x 8'5 (2.92m x 2.57m)

Bathroom

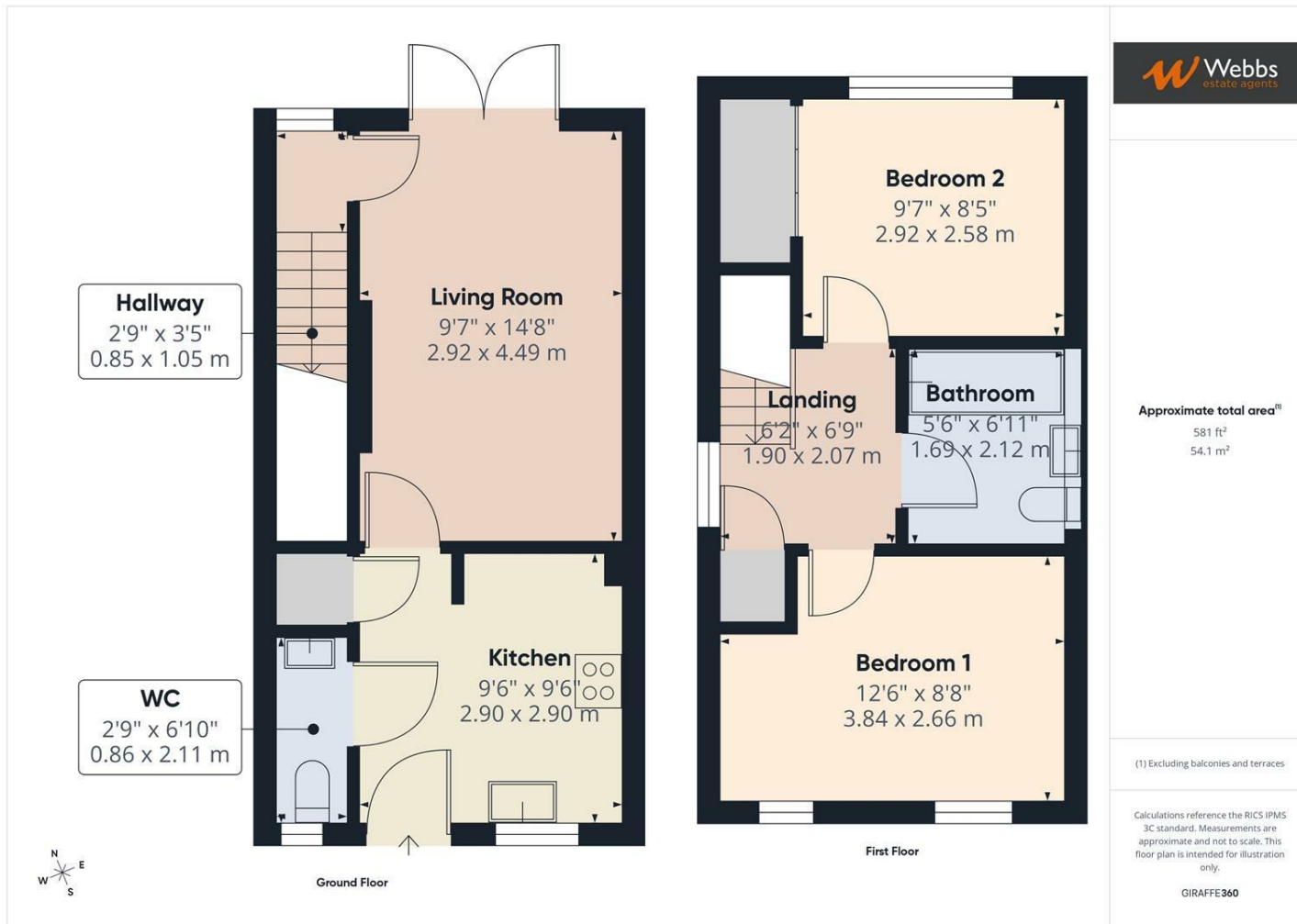
5'6 x 6'11 (1.68m x 2.11m)

Rear Garden

Identification Checks (R)







Webbs Estate Agents - endeavour to maintain accurate depictions of properties in Virtual Tours, Floor Plans and descriptions, however, these are intended only as a guide and purchasers must satisfy themselves by personal inspection.